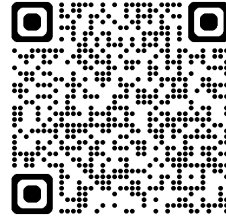
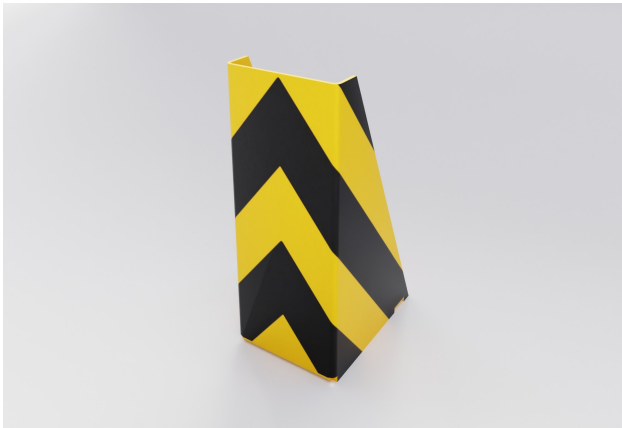


Technical sheet



Pallet racking corner protector – DP QRL10

PROPERTIES:

Material: steel

Colour: yellow / reflective black

Handling equipment: forklift

Impact resistance: high

Height: 400 mm

Product dimensions: 277 x 196 mm

Metal sheet thickness: 5 mm

Weight: 10 kg

Surface treatment: powder paint

Suitable use: indoor and outdoor areas

Possibility of disposal: recycling

PRODUCT DESCRIPTION:

The pallet racking corner protector is made of S235 steel. Surface treatment is solved with powder paint. Yellow traffic colour RAL1023 increases the visibility of the protector and warns of obstacles, which contributes to greater safety. The steel feet of the protector are made of 5 mm thick sheets. Fixing holes \varnothing 15 mm. The post has black reflective stripes.

USE:

The pallet racking corner protector is used to protect rack columns in production halls and warehouses.